

Sterile single-use WAL Applicator with integrated infiltration pump

body-jet®

the gentle way of liposuction

body-jet® system

1. Sterile single-use WAL Applicator with integrated infiltration pump.
2. Infiltration cannulae (resterilisable and single-use)
3. Irrigation and aspiration cannulae (resterilisable and single-use)
4. Cannula cleaning set
5. Suction bags (3 liter, single-use)
6. Suction containers (reusable)
7. Filters

Distributor in the USA:

Eclipsemed Ltd. 16850 Dallas Parkway Dallas, Texas 75248 Email sales@eclipsemed.com	Local 972 380 2911 Toll-free 800 759 6876 Fax 972 380 2953 Web www.eclipsemed.com
--	--

Dimensions [cm]: 178x54x60 (HxWxD)
 Weight: 46 kg
 Certified according to ISO 13485
 body-jet® is a Class II product
 The body-jet® has patents in the United States (10/520,209; 10/523,294; 10/322,524), other patents, and patents pending.
 body-jet® is a registered trademark of Human Med AG, Schwerin, Germany.

Caution: Federal law (USA) restricts this products to sale by or on the order of a physician.

WAL – Water-Assisted Lipoplasty for Aesthetic Body Contouring



 <p>human med® water-jet assisted medical technologies</p>	Manufacturer:	19061 Schwerin, Germany
	Wilhelm-Hennemann-Str. 9	Fax +49 (0)385 - 3 95 70-10
	Phone +49 (0)385 - 3 95 70-0	Web www.humanmed.com
	Email info@humanmed.com	



human med®
water-jet assisted medical technologies



Water-Assisted Lipoplasty – WAL for aesthetic body contouring.

Using the pulsating water spray...

The gentle fan-shaped water (saline) spray of the body-jet® achieves to release

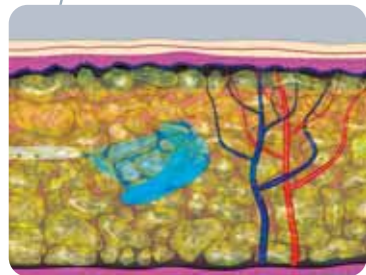
undesired fat cells from their connective tissue while vital structures like lymph and blood vessels are spared.

...to gently contour the body

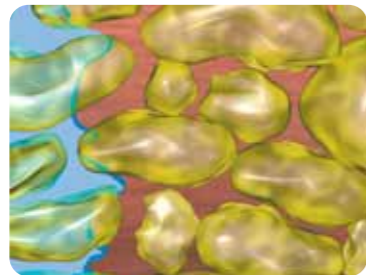
WAL uses saline solution just as a carrier for local analgesics and vasoconstrictors; high volume infiltration

to prepare fat fragmentation via a high interstitial pressure (the basic principle of traditional "Tumesce" methods) is not necessary.

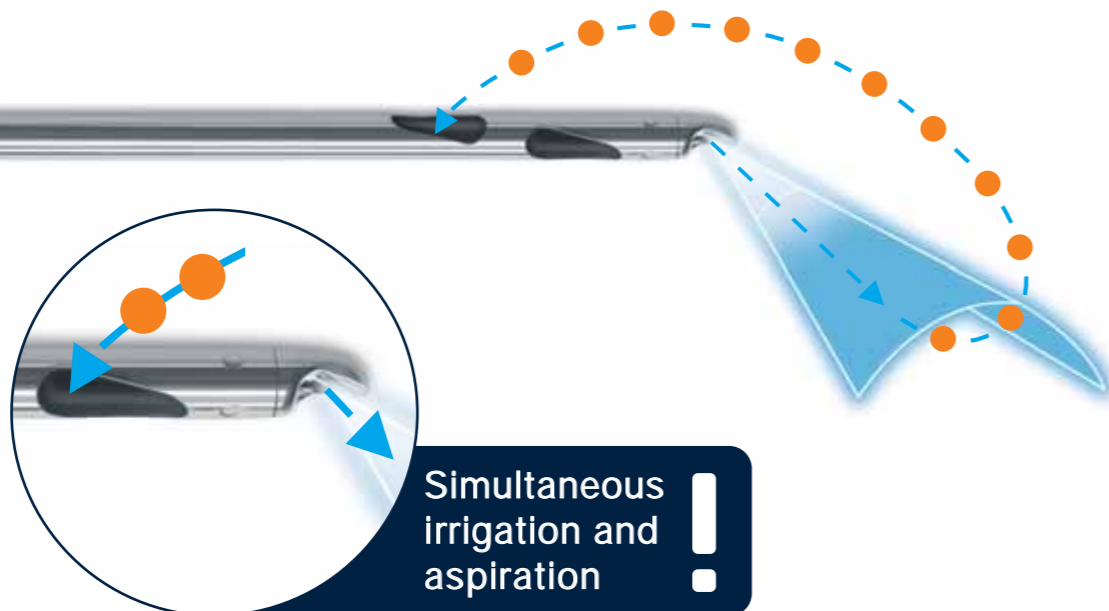
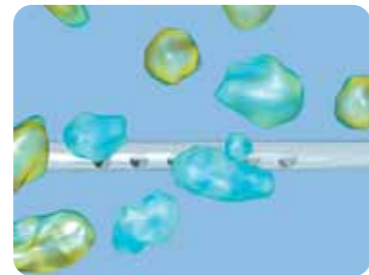
Steps in WAL procedure



Step 1: Infiltration. Saline spray is introduced into adipose tissue to loosen the structure and to release adipocytes.



Step 2: Irrigation and aspiration. Treated areas are not "bloated" because the infiltrated solution is being simultaneously re-aspirated.



WAL – with the body jet® has been shown to be a gentle method

- WAL does not require high-volume tumescent pre-infiltration with accompanying waiting times, which reduces the risks of systemic side effects. This also leads to reduced procedure times.
- The contours of the treated area remain unchanged throughout the whole procedure because much less TLA / saline solution is used for pre-infiltration.
- Considerably less intraoperative swelling allows the surgeon to contour the body and to achieve the target result with great precision.
- Considerably reduced pain-related impairment enables patients to recover quickly and return to normal daily activities rapidly.
- Postoperative pain and bruises (ecchymosis) are remarkably less with WAL compared to traditional lipoplasty.



References

- Taufig, A. Z.: Water-Jet Assisted Liposuction. In: Liposuction – Principles and Practice. Springer 2006; 326-330.
- Araco, A., Gravante, M. D., Araco, F., Delogu, D., Cervelli, V.: Comparison of Power Water-Assisted and Traditional Liposuction: A Prospective Randomized Trial of Postoperative Pain. Aesth. Plast. Surg. 31: 259-265, 2007.
- Man, D., Meyer, H.: Water Jet-Assisted Lipoplasty. Aesthetic Surgery Journal; May/June 2007, 342-346.