



Auriga^{XL}

The holmium all-rounder
for urology:
Expert for stone and BPH treatment





About StarMedTec

Our goal is to meet the demands of doctors for efficient surgical lasers that cover a wide range of therapy options.

The innovative laser systems provided by StarMedTec GmbH offer numerous advantages for doctors and patients. Low-impact treatment achieves significant improvements in terms of health and quality of life.

With know-how accumulated over more than 20 years and a large installed base, StarMedTec is the technology leader in the holmium laser segment. More than 1,000 standalone and desktop lasers have been successfully deployed around the world.

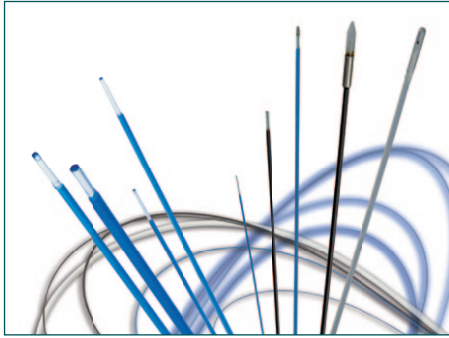
Our company stands for the development and production of trendsetting and reliable laser systems – made in Germany. Among other things, the world's first 1.9µm thulium laser for medical use came from StarMedTec.

Thanks to a global network of competent service and distribution partners, we guarantee optimum conditions for the highest customer satisfaction.



The all-round talent

Technology leadership



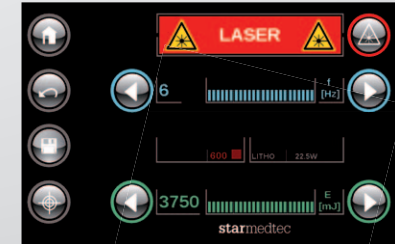
- Numerous application fibers
- Automatic fiber recognition
- Highly efficient LightTrail® fiber



- Made in Germany
- Optimized ergonomics
- Mobile, space-saving device
- Plug 'n play on common mains connections



- Intuitive user guidance
- Self-explanatory symbols for treatment selection
- Touch screen



- Full 50 watts at the fiber end
- Laser parameters and pulse lengths optimized for specific treatments
- High peak pulse output for lithotripsy
- 4,500mJ max. pulse energy

Expert for stone and BPH treatment

Versatile applications and accessories

The Auriga® XL is the high-output, universal holmium laser for urology applications and other medical fields (e.g. ENT, orthopedics, gastroenterology).

Its high peak pulse output makes it a master in lithotripsy. At the same time, the harmonized parameters of this all-rounder ensure outstanding results in prostate enucleation.

Lithotripsy

- Stones of all sizes, regardless of their composition
- All endoscopic methods
- In the entire urinary tract
- Stone dusting

Enucleation of the prostate

- For BPH (HoLEP)
- For BPH (HoLAP)
- Any size

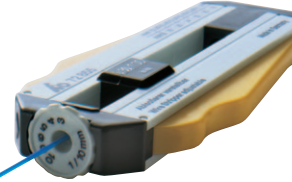
Bladder neck incision

Ablation / coagulation of condylomas, tumors

Vaporization of neoplasia and tumors

Treatment of strictures

Nasal concha reduction, tonsillectomy, polyps



Fiber stripper



Fiber holder and diamond cutter



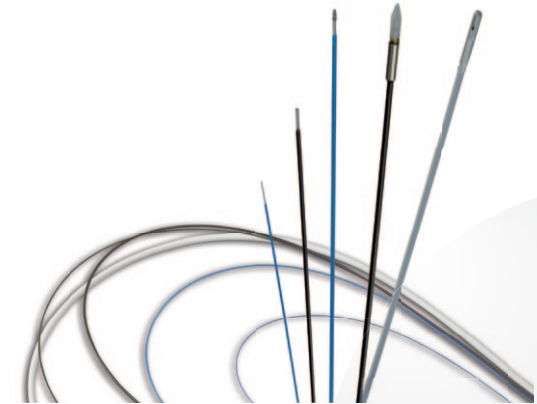
Fiber for flexible ureterorenoscope



LightTrail®, reusable



Fiber for rigid ureterorenoscope



LightTrail®, disposable and reusable, LightTrail® side-fire and LightTrail® LITT

The holmium all-rounder

Decisive effectiveness

The Auriga® XL is the high-performance laser system for minimally invasive procedures in nearly all surgical disciplines.

At the tip of the applicator, the user has the chosen output available with no loss. Thanks to coordinated treatment parameters and the effective output of the Auriga® XL, prostate enucleation achieves the same results as with any 100W laser system with a nominally higher output!

Proven holmium high-performance technology features a modern design with additional user-friendly elements. Decades of experience accumulated through close cooperation with top physicians along with the know-how of StarMedTec are combined in this system as well. Like all StarMedTec devices, the product is completely developed and produced in Germany.

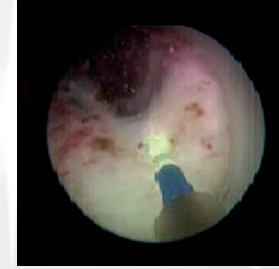
Easy handling and highest reliability are optimum prerequisites for all surgical laser applications. Especially configured

laser parameters for lithotripsy, ablation, coagulation and LITT allow the physician to achieve the best possible treatment results.

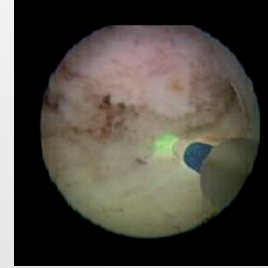
Self-explanatory symbols on the color touch screen guide the user through the menu and make it easy to select the planned treatment. Automatic fiber recognition registers the chosen fiber size and type, making a contribution to enhanced safety for the physician and patient. Only parameters that are allowable for the respective fiber size are activated. This function prevents damage to the fiber and the endoscopic device. The mobile standalone system is ready for use immediately without a warm-up phase and works with common standard mains connections.



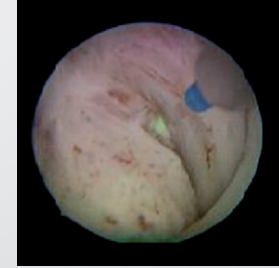
1. Initial finding



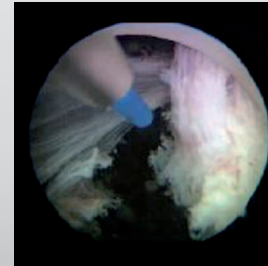
2. Incision at 5 o'clock



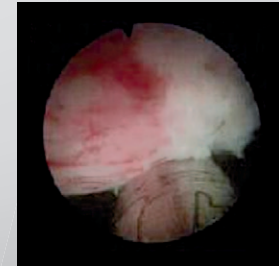
3. Enucleation of the middle lobe



4. Enucleation of the left lobe



5. Severing of the right lobe and discarding into the urinary bladder



6. Morcellation of the prostate lobes with the Wolf morcellator

With gracious permission © Prim. Dr. M. Dunzinger



Numerous advantages

For the physician and the patient

Physician

- ✓ High success rate in the disintegration of all types and sizes of stones
- ✓ Effective and economical enucleation of the prostate, regardless of volume
- ✓ Effective cutting and coagulation of soft tissue
- ✓ Green aiming beam for enhanced contrast on the tissue
- ✓ Safety due to automatic fiber recognition
- ✓ Flexibility thanks to a wide range of fibers
- ✓ Efficient and time-saving treatment with high energy at the fiber end
- ✓ Mobile standalone device compatible with common standard mains connections
- ✓ Small investment, economical to maintain

Patient

- ✓ High stone elimination rate in one session
- ✓ Effective and lasting enucleation of the prostate with BPH
- ✓ Low-impact, safe treatment
- ✓ Short hospital stay
- ✓ Minimally invasive treatment strategy
- ✓ Established treatment method

Auriga® XL

Technical data*




Laser data	
Laser type	Holmium laser
Wavelength	2.1µm
Output (max.)	50W
Pulse energy	200–4,500mJ
Pulse duration	200–600µs
Pulse frequency	5–25Hz
Aiming beam, green	523nm, <1mW, can be fine-tuned
Device data	
Mains supply	220–240VAC 50Hz, 220VAC 60Hz, 16A (max. 3kW), single phase
Display	WVA color touch screen (wide view angle)
Cooling	Internal cooling system
Dimensions (WxDxH)	35cm x 84cm x 104cm
Weight	75kg
Fibers	LightTrail® 230–800µm, LightTrail® side-fire and LightTrail® LITT
Standards and regulatory approvals	
Laser class	4
Regulatory approval	EC Medical Device Directive 93/42/EEC FDA approval
Quality management	DIN EN ISO 13485

* Changes to the technical data reserved

StarMedTec GmbH
Kreuzstraße 22 | 82319 Starnberg
Germany
info@starmedtec.com
www.starmedtec.com

Reliability builds trust.

 + 49 (0) 8151/268 61-0



CE 1275

U. S. federal law
restricts this device
to sale by or on the
order of a physician.

